

# *xLM Newsletter*



YOUR CHALLENGES | OUR SOLUTIONS

Volume 5

Issue 1

September 2011

**Inside this Issue:**

About Us .....3

What's New @ xLM .....3

    Ravi Janga joins xLM Solutions .....3

    PLM Assessment .....4

    Enovia V6 – Discovery Workshop .....4

SmarTeam News .....5

    SmarTeam Vault Upgrader Rehashed .....5

    End-of-Service Dates .....6

    Upcoming Releases and CAD Support Road Map.....7

SolidWorks EPDM .....8

    SolidWorks Data Loading Expertise .....8

    EPDM Batch Print / PDF Generation and EPDM Task Customizations .....8

    EPDM URL Generation Tool .....9

    Upcoming Releases and CAD..... 10

    EPDM CAD Support..... 10

    End-of-Service Dates ..... 12

Feedback & Contact Us ..... 13

    Contact Us ..... 13

## *About Us*

---



Welcome to another issue of the *xLM Newsletter!* If you are unfamiliar with us, here is what **xLM Solutions** is, and what we can do for you.

The xLM team consists of experienced and exceptional software consulting and system integration professionals. We have extensive knowledge in Product, Data, and Information Lifecycle Management (PLM, DLM, ILM); information, Internet and Microsoft technologies; and other enterprise software solutions. Our clients span a wide variety of industries, all seeking solutions to a common challenge: to effectively and efficiently manage proprietary, classified or otherwise sensitive data. To address this challenge, we provide our clients with quality end-to-end Lifecycle Management services including requirement analysis, solution installation, configuration, customization, support, and maintenance.

We take pride in client attention and satisfaction. We listening carefully to ensure that your PLM and IT needs are properly met in a timely manner. It is our goal to provide you, our valuable customer, with quality tools, resources, and innovative solutions for successful information systems management. Call us and let us show you how our solutions can meet your needs and challenges!

## *What's New @ xLM*

---

### **Ravi Janga joins xLM Solutions**

We are pleased to announce that Ravi Janga has joined xLM Solutions. Ravi is an expert in Enovia V6 / Matrix One. Ravi has over 10 years experience implementing and customizing Enovia V6 / Matrix One. He also has experience in various Enovia V6 Centrals ranging from Engineering and Design Central to Project Management and Supply Chain Central. Ravi has a broad diversified industry background having provided services to customers in the apparel industry, the medical device industry, automotive industry and the discrete manufacturing industry among others.

© xLM Solutions, LLC. 2011. All rights reserved. [www.xlmsolutions.com](http://www.xlmsolutions.com). Email: [info@xlmsolutions.com](mailto:info@xlmsolutions.com). Tel: (248) 926-5932.

This newsletter is provided as an information service to xLM clients and other interested individuals. xLM disclaims all responsibility for any damages, losses, costs or expenses incurred by any party from the direct or indirect use of the information contained in this newsletter. You should contact xLM directly to discuss materials covered in this newsletter before implementation.

Ravi's project experience revolves around solution architecture, installation, customization, data migration, data integration and upgrades of the Enovia V6.

If you have consulting needs around Enovia V6 or merely some general questions or if you would like to see a demo of the Enovia V6 solution, feel free to contact us as we are to assist with your needs.

## **PLM Assessment**

xLM Solutions' paramount goal is that our customers are getting the most out of their PLM investment. With this goal in mind xLM has initiated a program wherein we conduct PLM assessments to review a client's current business processes, how its current PLM/PDM system is implemented and the client's PLM strategy to determine how the company can best increase its return on investment around PLM.

The assessment results provide our expert consultants with the information to analyze and identify areas of improvement within the business. We make use of questionnaires and interviews to collect data and make recommendations based on PLM best practices. Upon completion of the assessment, a written report is developed detailing the findings of the assessment and a proposed scope of work to implement suggested improvements to the PLM/PDM system along with justifications based on ROI for such improvements. In addition, throughout the process, the engineering / product teams and management will be educated on the value and business benefits of a full PLM roll out.

The PLM assessment is estimated to take between 1-2 days to perhaps a week or more depending on the size of the customer and the processes involved. It is expected that resources from the following departments will be involved / questioned as part of our analysis: Sales, Marketing, Quoting, Engineering and Design, Purchasing, Manufacturing and Support / After Sales Service.

The PLM assessment can be tailored to (i) existing customers that have a small group working with a PLM/PDM system and who are looking to expand, (ii) a new customer who is looking to implement a PLM/PDM system or (iii) a customer who already has or will be purchasing a specific system such as Enterprise PDM, Enovia SmarTeam or Enovia V6.

## **Enovia V6 – Discovery Workshop**

With the release of V6 over a year ago, we are seeing more and more excitement around the product. Nonetheless we are still seeing a number of

© xLM Solutions, LLC. 2011. All rights reserved. [www.xlmsolutions.com](http://www.xlmsolutions.com). Email: [info@xlmsolutions.com](mailto:info@xlmsolutions.com). Tel: (248) 926-5932.

This newsletter is provided as an information service to xLM clients and other interested individuals. xLM disclaims all responsibility for any damages, losses, costs or expenses incurred by any party from the direct or indirect use of the information contained in this newsletter. You should contact xLM directly to discuss materials covered in this newsletter before implementation.

companies that are committed to SmarTeam and EPDM products. Indeed we are still conducting new implementations for such systems and in the right circumstances these products can provide the customer with exactly what it needs. We are here to work with our customers to determine if it makes sense at this time to deploy a V6 solution or use a V5 solution like SmarTeam or SolidWorks EPDM.

To help our customers with such decisions we are providing Enovia V6 Discovery Workshops. In this Workshop we set up a simple Enovia V6 mini environment, educate the customer around Enovia V6, discuss options to implement V6 based on the customer's requirements and strategies on how legacy data can be migrated into a V6 environment. This will allow companies to experience Enovia V6 in a quick and low cost manner before making a full commitment to the solution.

## *SmarTeam News*

---

### **SmarTeam Vault Upgrader Rehashed**

Lately we have been asked by customers how they can upgrade the CAD version of all of their files in their SmarTeam Vault? This has been especially true for users of SolidWorks and Inventor. For instance, as years go by without files being opened in the new CAD version, large gaps can exist from an earlier CAD version file to the latest CAD version. This leads to possible issues when opening a very old CAD version file in a newer version of the CAD software. However, since SMARTEAM renames all files when placing them in the Vault, it is not possible to run a CAD supplied program against these files and or upgrade them as they longer have their original names.

To overcome this issue, we have developed the ability to perform operations on files stored within the SmarTeam Vault. The Vault Processor tool works by copying the file and any reference files out of the vault to a specified directory whereby a program can run on them. Once the "other tool" such as an Upgrade has performed its operation on the files, the files are then placed back into the SMARTEAM Vault.

Features of the tool include:

- Easy to install and operate
- The ability to select files by selecting objects in SMARTEAM or defined by SQL query

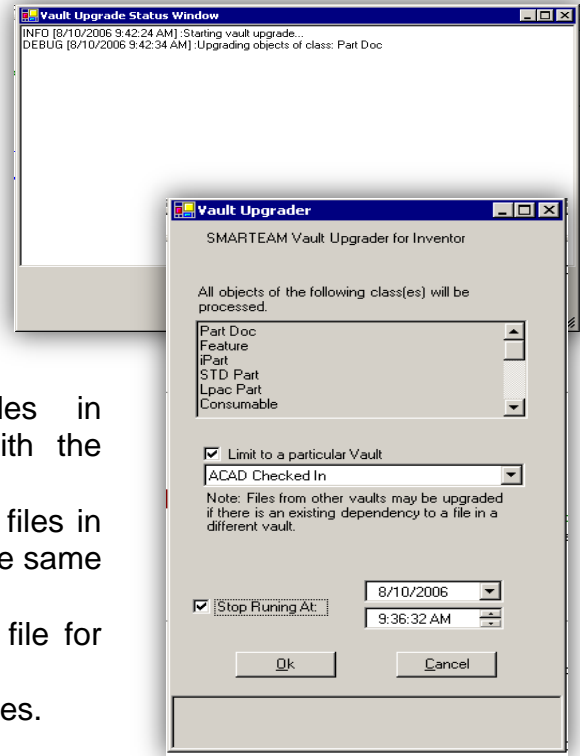
© xLM Solutions, LLC. 2011. All rights reserved. [www.xlmsolutions.com](http://www.xlmsolutions.com). Email: [info@xlmsolutions.com](mailto:info@xlmsolutions.com). Tel: (248) 926-5932.

This newsletter is provided as an information service to xLM clients and other interested individuals. xLM disclaims all responsibility for any damages, losses, costs or expenses incurred by any party from the direct or indirect use of the information contained in this newsletter. You should contact xLM directly to discuss materials covered in this newsletter before implementation.

- Configurable status messages for each object's file being processed
- Configurable directory where the files will be copied
- The ability to set start and stop times for running

Examples of how the tool has been used include:

- Performing rebuilds on SolidWorks files in SMARTEAM to correct viewing issues with the SolidWorks Viewer
- Performing Inventor Updates on all Inventor files in SMARTEAM to insure all Inventor files are the same version.
- Bulk Creation of an additional neutral view file for any Cad file in SMARTEAM
- Updating of title block formats for AutoCAD files.



## End-of-Service Dates\*

Please note the following end-of-service dates for the respective SmarTeam version:

SmarTeam Version	End-of-Service Date
V5R16	Dec 31, 2007
V5R17	Sept. 29, 2008
V5R18	Oct. 10, 2009

---

\* Information provided by Dassault Systèmes as of September 13, 2011 and is subject to change without prior notice.

© xLM Solutions, LLC. 2011. All rights reserved. [www.xlmsolutions.com](http://www.xlmsolutions.com). Email: [info@xlmsolutions.com](mailto:info@xlmsolutions.com). Tel: (248) 926-5932.

This newsletter is provided as an information service to xLM clients and other interested individuals. xLM disclaims all responsibility for any damages, losses, costs or expenses incurred by any party from the direct or indirect use of the information contained in this newsletter. You should contact xLM directly to discuss materials covered in this newsletter before implementation.

V5R19 Jun 03, 2011

V5R20 Oct. 19, 2012

After the end-of-service date, no more service packs, hot fixes or Dassault/SmarTeam support will be provided for the specific version. If your version of SmarTeam is reaching its end-of-service date, we strongly encourage you to begin developing an upgrade plan now to avoid disruptions later. If you have any questions, please contact us. We will be glad to provide further information and assist you in planning and deploying your SmarTeam upgrade.

### Upcoming Releases and CAD Support Road Map\*

AutoVue 20.1	N/A	V5R21 SP2
SolidWorks 2012	32 & 64 bit	V5R21 SP2
AutoCAD 2012	32 bit	V5R21 SP2
Inventor 2012	32 bit	V5R21 SP2
eDrawings 2012	N/A	V5R21 SP2
SolidEdge ST4	32 bit	V5R21 SP3
AutoCAD 2012	64 bit	V5R21 SP3
Inventor 2012	64 bit	V5R21 SP3
SolidEdge ST4	64 bit	V5R21 SP4

Feel free to contact us if you have questions regarding CAD support for previous releases and service packs.

---

\*Road map information provided by Dassault Systèmes as of September 13, 2011 and is subject to change without prior notice

© xLM Solutions, LLC. 2011. All rights reserved. [www.xlmsolutions.com](http://www.xlmsolutions.com). Email: [info@xlmsolutions.com](mailto:info@xlmsolutions.com). Tel: (248) 926-5932.

This newsletter is provided as an information service to xLM clients and other interested individuals. xLM disclaims all responsibility for any damages, losses, costs or expenses incurred by any party from the direct or indirect use of the information contained in this newsletter. You should contact xLM directly to discuss materials covered in this newsletter before implementation.

## *SolidWorks EPDM*

---

### **SolidWorks Data Loading Expertise**

Do you need to import data into SolidWorks? xLM Solutions has extensive experience with data loading including extracting data from legacy systems and importing the data in SolidWorks EPDM. We have performed such data loading from ERP systems, SmarTeam, MatrixOne and flat file directories. Though we are not an expert in every legacy PDM/ERP system, we have observed that if the data can get out of the legacy system into some type of delimited format, for instance in Microsoft Excel, we have tools and processes to load the data into SolidWorks EPDM through the SolidWorks Import Utility. Our data loading expertise entails the full spectrum of data loading activities such as:

- Analysis of data to be loaded
- Developing / Adapting of the data loading tools
- Testing of the data loading tools
- Validation of the data load

SolidWorks recommends the EPDM xLM Import tool as the preferred method to load data that has associated meta and multiple revisions. We have developed a unique tool to help translate data into the required XML format and assist with validating such data. Our proprietary tool takes data from an Excel file, Data Table or a delimited file and translates it into the correct XML format for the EPDM import tool. In addition our validation tools can split the XML file into more manageable files and validate data such as file and directory lengths. These tools will allow the customer or your consultants to use this tool for data import without the need of a programming background. We have many customers that can attest to our expertise around data loading.

### **EPDM Batch Print / PDF Generation and EPDM Task Customizations**

xLM has developed an EPDM Task that takes batch printing to the next level. Our Batch Printing / PDF Generations task expands upon out of the box EPDM tasks to allow:

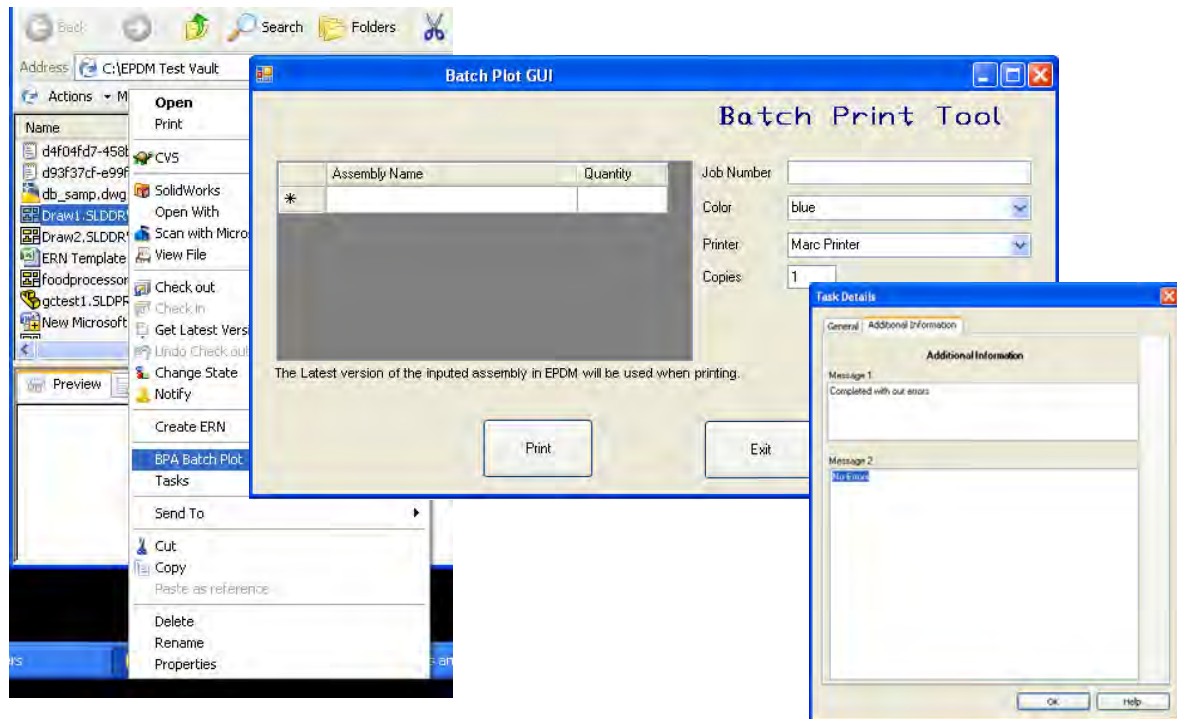
- The ability to select a parent assembly and print / pdf generate all drawings for all children in the assembly and sub assemblies
- The ability to dynamically add data to the printed drawing such as job number or other specific attributes for the batch print / pdf generation

© xLM Solutions, LLC. 2011. All rights reserved. [www.xlmsolutions.com](http://www.xlmsolutions.com). Email: [info@xlmsolutions.com](mailto:info@xlmsolutions.com). Tel: (248) 926-5932.

This newsletter is provided as an information service to xLM clients and other interested individuals. xLM disclaims all responsibility for any damages, losses, costs or expenses incurred by any party from the direct or indirect use of the information contained in this newsletter. You should contact xLM directly to discuss materials covered in this newsletter before implementation.

- The ability to allow the user to select more than one file and send it to a batch server to be printed / pdf generated
- The ability to specify printing parameters such as: page size and number of copies to print
- Printing and PDF generation for many different file formats beyond SolidWorks.
- Batch Prints / PDF Generation can Task can be controlled through an EPDM Menu Pick or Workflow
- Detailed error log reporting to trouble shoot batch processing issue

These tasks can then be furthered enhanced to meet specific individual customer requirements



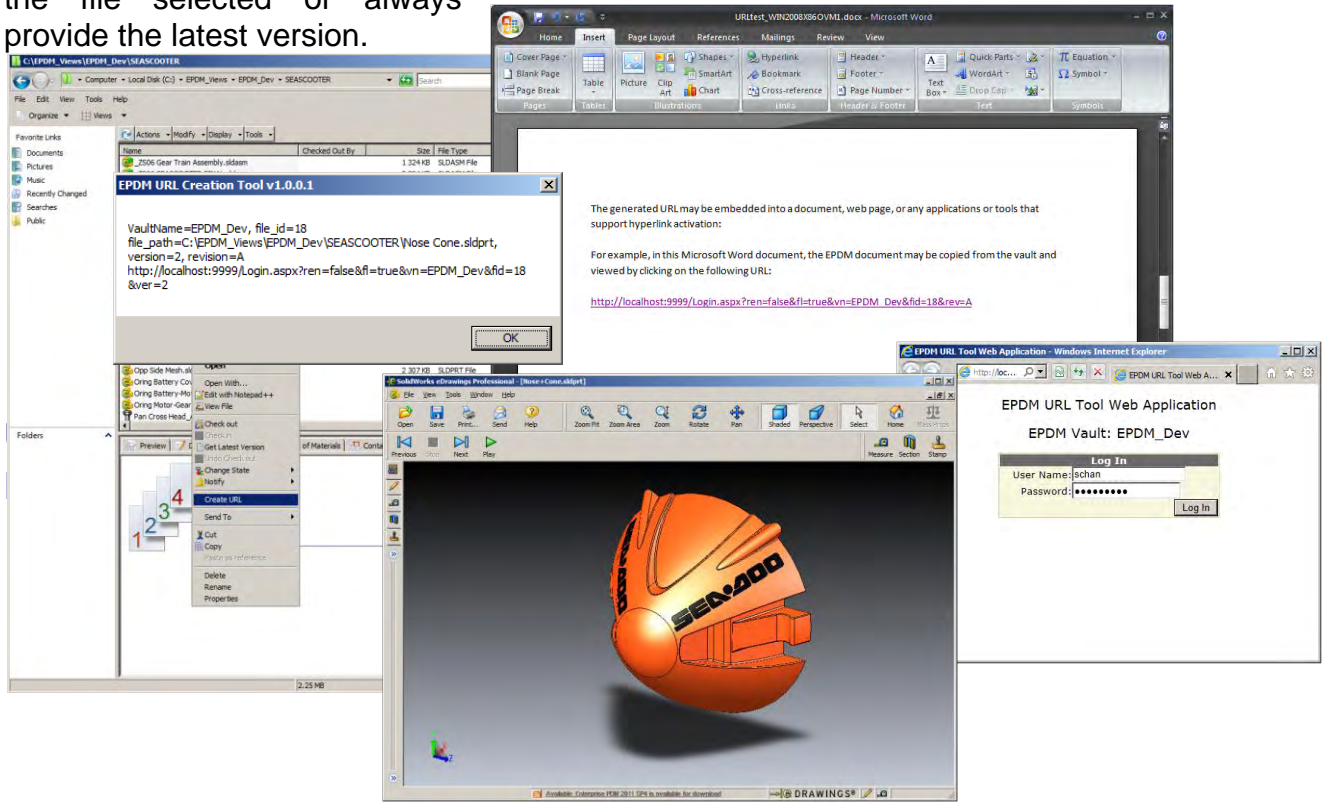
## EPDM URL Generation Tool

This tool allows a user to generate a URL based on a file or files in EPDM. This URL can then be placed in any location that would accept a URL such as an email, MS Word document, MS SharePoint, etc. Upon clicking of the URL the

© xLM Solutions, LLC. 2011. All rights reserved. [www.xlmsolutions.com](http://www.xlmsolutions.com). Email: [info@xlmsolutions.com](mailto:info@xlmsolutions.com). Tel: (248) 926-5932.

This newsletter is provided as an information service to xLM clients and other interested individuals. xLM disclaims all responsibility for any damages, losses, costs or expenses incurred by any party from the direct or indirect use of the information contained in this newsletter. You should contact xLM directly to discuss materials covered in this newsletter before implementation.

file represented by it will be displayed in a web browser. The URL tool can be configured to provide the specific version of the file selected, specific revision of the file selected or always provide the latest version.



## EPDM CAD Support

(x32) indicates support on 32-bit OS only

CAD Vendor - Version	CAD Vendor	Enterprise PDM 2010		Enterprise PDM 2011		Enterprise PDM 2012	
		File Support	Add-In Support	File Support	Add-In Support	File Support	Add-In Support
SolidWorks 2006	Sep-05	Yes	No	Yes	No	Yes	No
SolidWorks 2007	Sep-06	Yes	No	Yes	No	Yes	No
SolidWorks 2008	Sep-07	Yes	Yes	Yes	No	Yes	No
SolidWorks 2009	Sep-08	Yes	Yes	Yes	Yes	Yes	No
SolidWorks 2010	Sep-09	Yes	Yes	Yes	Yes	Yes	Yes
SolidWorks 2011	Sep-10	No	No	Yes	Yes	Yes	Yes
SolidWorks 2012	Oct-11	No	No	No	No	Yes	Yes
PTC Pro/ENGINEER 2001	Jun-04	No	No	No	No	No	No

© xLM Solutions, LLC. 2011. All rights reserved. [www.xlmsolutions.com](http://www.xlmsolutions.com). Email: [info@xlmsolutions.com](mailto:info@xlmsolutions.com). Tel: (248) 926-5932.

This newsletter is provided as an information service to xLM clients and other interested individuals. xLM disclaims all responsibility for any damages, losses, costs or expenses incurred by any party from the direct or indirect use of the information contained in this newsletter. You should contact xLM directly to discuss materials covered in this newsletter before implementation.

PTC Pro/ENGINEER Wildfire	Jun-05	No	No	No	No	No	No
PTC Pro/ENGINEER Wildfire 2.0	Jun-06	No	No	No	No	No	No
PTC Pro/ENGINEER Wildfire 3.0	Jun-07	Yes	Yes	Yes	Yes	Yes	Yes
PTC Pro/ENGINEER Wildfire 4.0	Jun-08	Yes	Yes	Yes	Yes	Yes	Yes
PTC Pro/ENGINEER Wildfire 5.0	Jun-09	2010 SP2	2010 SP2	Yes	Yes	Yes	Yes
Creo Elements/Pro (R5.0)	Oct-10	2010 SP2	2010 SP2	Yes	Yes	Yes	Yes
AutoCAD 2006	Mar-05	Yes	No	Yes	No	Yes	No
AutoCAD 2007	Mar-06	Yes	Yes (x32)	Yes	Yes (x32)	Yes	Yes
AutoCAD 2008	Mar-07	Yes	Yes (x32)	Yes	Yes (x32)	Yes	Yes
AutoCAD 2009	Mar-08	Yes	Yes (x32)	Yes	Yes (x32)	Yes	Yes
AutoCAD 2010	Mar-09	2010 SP2	2010 SP2 (x32)	Yes	Yes (x32)	Yes	Yes
AutoCAD 2011	Mar-10	2010 SP2	2010 SP2 (x32)	Yes	Yes (x32)	Yes	Yes
AutoCAD 2012	Mar-11	2010 SP2	2010 SP2 (x32)	Yes	Yes (x32)	Yes	Yes
Autodesk Inventor R10	Apr-05	Yes	Yes	Yes	Yes	Yes	Yes
Autodesk Inventor R11	Apr-06	Yes	Yes	Yes	Yes	Yes	Yes
Autodesk Inventor 2008	Apr-07	Yes	Yes	Yes	Yes	Yes	Yes
Autodesk Inventor 2009	Apr-08	Yes	Yes	Yes	Yes	Yes	Yes
Autodesk Inventor 2010	Mar-09	2010 SP1	2010 SP1	Yes	Yes	Yes	Yes
Autodesk Inventor 2011	Mar-10	No	No	Yes	Yes	Yes	Yes
Autodesk Inventor 2012	Mar-11	No	No	No	No	Yes	Yes
Solid Edge V18	Sep-05	Yes (x32)	No	Yes (x32)	No	Yes	No
Solid Edge V19	Jun-06	Yes (x32)	No	Yes (x32)	No	Yes	No
Solid Edge V20	Aug-07	Yes (x32)	No	Yes (x32)	No	Yes	No
Solid Edge with Synchronous Technology (V21)	May-08	Yes (x32)	No	Yes (x32)	No	Yes	No

© xLM Solutions, LLC. 2011. All rights reserved. [www.xlmsolutions.com](http://www.xlmsolutions.com). Email: [info@xlmsolutions.com](mailto:info@xlmsolutions.com). Tel: (248) 926-5932.

This newsletter is provided as an information service to xLM clients and other interested individuals. xLM disclaims all responsibility for any damages, losses, costs or expenses incurred by any party from the direct or indirect use of the information contained in this newsletter. You should contact xLM directly to discuss materials covered in this newsletter before implementation.

Solid Edge with Synchronous Technology 2 (V22)	May-09	2010 SP2 (x32)	No	2011 SP2 (x32)	No	Yes	No
Solid Edge with Synchronous Technology 3 (V23)	Oct-10	No	No	No	No	Yes	No
Solid Edge with Synchronous Technology 4 (V24)	Oct-11	No	No	No	No	No	No

**Notes:**

1. File Support refers to the ability to drag and drop or save files into the Vault and for SolidWorks Enterprise PDM to understand the relationships between parts, drawings and assemblies, manage properties and preview the CAD files.
2. Add-In Support refers to the ability to execute SolidWorks Enterprise PDM commands from within the CAD application through a toolbar, pull down menu or other task pane.
3. SolidWorks add-in is officially supported and tested with matching SolidWorks version and up to two earlier versions. File formats from older versions are supported but there may be limitations in what can be extracted from them.
4. AutoCAD add-in is only supported on AutoCAD 32-bit edition for EPDM 2011 and older. EPDM 2012 introduces 64-bit add-in support. DWG file format supported on both 32 and 64-bit OS.
5. Pro/Engineer support requires full Pro/E application installed (64-bit OS support introduced in Enterprise 2010 SP4). Starting with EPDM 2012 Pro/E installation package will have to be requested from field services - see details on VRC.
6. SolidEdge support requires full SolidEdge application installed and only supported on 32-bit OS for EPDM 2011 and older. EPDM 2012 introduces 64-bit support. There is no SolidEdge add-in available for any version.
7. AutoCAD 2012, 2011 and 2010 use same DWG file format and add-in support. While not officially tested with AutoCAD 2011, Enterprise 2010 SP2 and up should work (KB S-048967). Official AutoCAD 2011 support is with EPDM 2011. Official AutoCAD 2012 support is with EPDM 2012.
8. Creo Elements/Pro (R5.0) release is same as Pro/E 5.0 and compatible. There is no plugin or add-in support for Creo 1.0.
9. The CAD Vendor release dates are approximate and provided for reference only.

**End-of-Service Dates**

SolidWorks is committed to supporting two previous versions of its products in addition to the current release. Currently, SolidWorks is supporting SolidWorks EPDM 2011 as well as EPDM 2009 and 2008. EPDM 2012 is out in beta and will be released shortly.

© xLM Solutions, LLC. 2011. All rights reserved. [www.xlmsolutions.com](http://www.xlmsolutions.com). Email: [info@xlmsolutions.com](mailto:info@xlmsolutions.com). Tel: (248) 926-5932.

This newsletter is provided as an information service to xLM clients and other interested individuals. xLM disclaims all responsibility for any damages, losses, costs or expenses incurred by any party from the direct or indirect use of the information contained in this newsletter. You should contact xLM directly to discuss materials covered in this newsletter before implementation.

## *Feedback & Contact Us*

---

We'd love to hear from you! Please send us your thoughts on this newsletter and future topic ideas that you would like us to cover. Also, send us your interesting SmarTeam, SolidWorks EPDM, Autodesk and SharePoint experiences and we will share your story with our readers!

xLM is a consulting company with extensive experiences in delivering innovative solutions and customizations to solve difficult PLM and IT challenges. It is our goal to assist you with your SmarTeam, SolidWorks EPDM, Autodesk, and SharePoint implementation and to partner with you in developing and deploying the best PLM and collaboration solutions for your environment. Contact us and let us show you how we can meet **your challenges** with **our solutions**, and make things simpler and better for you.

### Contact Us



To contact us, please visit our web site at:

<http://www.xlmsolutions.com>

call:

(248) 926-5932

or send email to:

[info@xlmsolutions.com](mailto:info@xlmsolutions.com)

xLM Solutions, LLC.  
6689 Orchard Lake Road  
Suite 112  
West Bloomfield, MI 48322-3404

© Copyright 2011, xLM Solutions, LLC. All rights reserved.

© xLM Solutions, LLC. 2011. All rights reserved. [www.xlmsolutions.com](http://www.xlmsolutions.com). Email: [info@xlmsolutions.com](mailto:info@xlmsolutions.com). Tel: (248) 926-5932.

This newsletter is provided as an information service to xLM clients and other interested individuals. xLM disclaims all responsibility for any damages, losses, costs or expenses incurred by any party from the direct or indirect use of the information contained in this newsletter. You should contact xLM directly to discuss materials covered in this newsletter before implementation.