

# *xLM ENOVIA SmarTeam Newsletter*



**YOUR CHALLENGES | OUR SOLUTIONS**

Volume 2

Issue 3

December 2008

## *Inside this Issue:*

About Us .....	2
Personal Note .....	2
Season's Greetings.....	3
What's New at xLM .....	3
xLM SmarTeam Tools.....	4
SmarTeam News .....	7
SmarTeam Release Info .....	8
Feedback & Contact Us .....	10

## *About Us*

---

Welcome to another issue of the *xLM ENVOIA SmarTeam Newsletter*! If you are unfamiliar with us, here is what **xLM Solutions** is, and what we can do for you.

The xLM team consists of experienced and exceptional software consulting and system integration professionals. We have extensive knowledge in Product Lifecycle Management (PLM); information, Internet and Microsoft technologies; and other enterprise software solutions. Our clients span a wide variety of industries, all seeking solutions to a common challenge: to effectively and efficiently manage proprietary, classified or otherwise sensitive data. To address this challenge, we provide our clients with quality end-to-end PLM services including requirement analysis, solution installation, configuration, customization, support, and maintenance.

We take pride in client attention and satisfaction. We listening carefully to ensure that your PLM and IT needs are properly met in a timely manner. It is our goal to provide you, our valuable customer, with quality tools, resources, and innovative solutions for successful information systems management. Call us and let us show you how our solutions can meet your needs and challenges!

## *Personal Note*

---

For those of who do not know, I was recently diagnosed with Testicular Cancer and I have been going through Chemo Therapy. There are some very rough Chemo weeks and then some that are less onerous. Therefore, I expect to be in and out of the office until Dec 15 as treatment continues. After that, as the prognosis is excellent and I should make a full recovery, I will be available full time as usual. I would also like to thank all those who have sent well wishes during this time. Your kind words of support and your prayers have meant a lot to me and it is very much appreciated.

Thank You,  
Marc

## *Season's Greetings*

---

As 2009 is just around the corner, we wish to thank you for your continuing support this past year. It has been our pleasure working with you to meet your PLM needs.

Have a happy holiday season, and a very successful new year!

Best wishes from the xLM associates.

## *What's New at xLM*

---

### **Our Newest Associate**

We are pleased to announce Kannan Premkumar has joined xLM as a SmarTeam Consultant.

Kannan specializes in developing custom PLM solutions for SmarTeam and PDM Works (Workgroup and Enterprise), with integrations into SolidWorks, Autodesk Inventor, Microsoft SQL Server, and Microsoft Access. He is skilled in Microsoft .Net framework, C#, C++, Java, PHP, JavaScript, HTML and SQL programming. He is also knowledgeable in CSS, MySQL, as well as general solution development in Windows, Linux, and UNIX environments.

Kannan holds a Bachelor of Science degree in Computer Technology (BSCT), *summa cum laude*, from Wayne State University, and an Associate of Applied Science degree in Computer Information Systems (AAS-CIS) from Oakland Community College. Kannan's exemplary scholastic honoraries include the Presidential Scholarship, Academic Excellence Award, and inclusions on the Dean's List. He is also a member of the Golden Key, Phi Theta Kappa, and Tau Alpha Pi honor societies.

Kannan is looking forward to serving your PLM needs.

This newsletter is provided as an information service to xLM clients and other interested individuals. xLM disclaims all responsibility for any damages, losses, costs or expenses incurred by any party from the direct or indirect use of the information contained in this newsletter. You should contact xLM directly to discuss materials covered in this newsletter before implementation.

## *xLM SmarTeam Tools*

---

### **SmarTeam-SharePoint Integration**

We are committed to providing our valuable customers with the ultimate and most innovative solutions to simplify and facilitate effective collaborations and PLM. Our latest solution is a newly enhanced SmarTeam-SharePoint integration web part for Windows SharePoint Services. Since its initial release earlier this year, the SmarTeam web part has generated a tremendous amount of interest and discussions within both the SmarTeam and SharePoint communities. Based on valuable inputs and feedbacks from users and reviewers, the web part has been completely enhanced from the ground up. The new release is built on a revised architectural framework that further boosts performance and allows for easy customizations and feature enhancements.

Some of the enhanced features and user experiences include:

- A *treeview* control for selecting the class and corresponding attributes for both query entries and results display (Figure 1).
- Options to select attributes for queries
- Options to select attributes for display in the query results data table (Figure 2)
- Flexibility to specify the column ordering for the query results table (Figure 2)
- The option to group the query results
- Flexibility to select how to group the query results (by file name, descriptions, file type, product ID, etc.)
- Supports the selection and switching of the SmarTeam database used
- Supports multiple instances of the web part on the same hosting page with each web part accessing either the same or a different SmarTeam database
- XML-based menu templates for customizable, site-specific file operations (e.g., save to a local folder) (Figure 3)
- XML-based configurable URL specification for connection to the SmarTeam web editor

Other customization options are available; please contact us for more information. Let us show you how integrating a selected group of the popular SmarTeam functionalities into your SharePoint environment can facilitate collaboration, improve productivity, and ultimately increase your ROI.

This newsletter is provided as an information service to xLM clients and other interested individuals. xLM disclaims all responsibility for any damages, losses, costs or expenses incurred by any party from the direct or indirect use of the information contained in this newsletter. You should contact xLM directly to discuss materials covered in this newsletter before implementation.

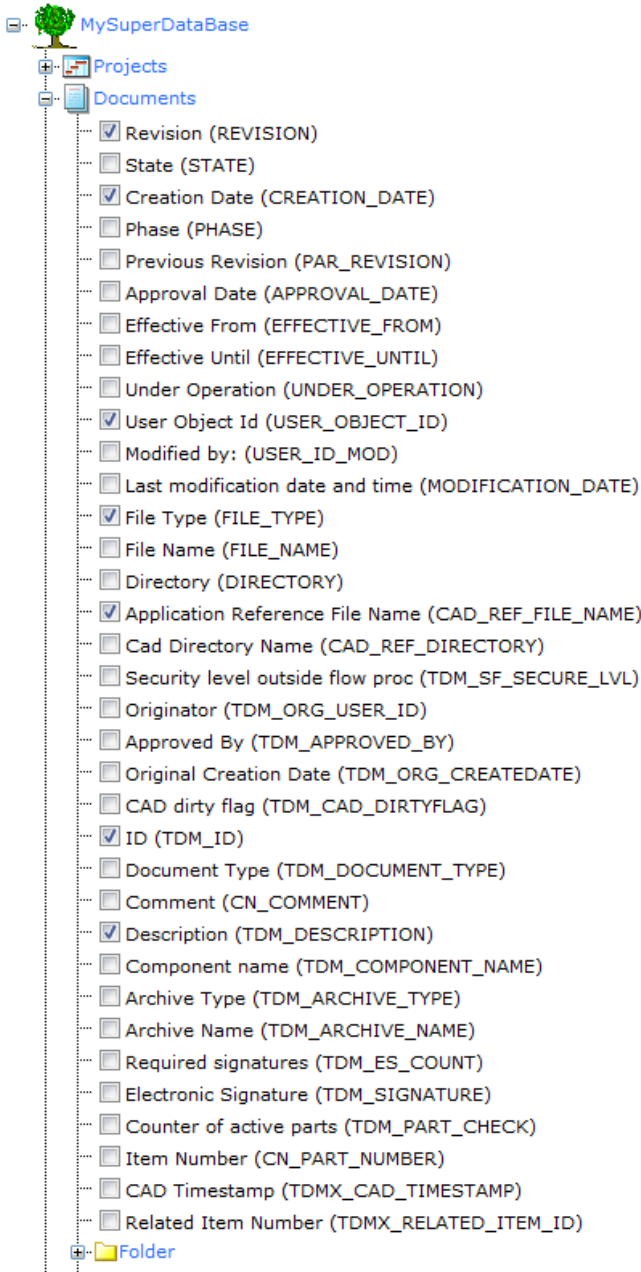


Figure 1 Treeview control for selecting class and attributes for queries and results display

This newsletter is provided as an information service to xLM clients and other interested individuals. xLM disclaims all responsibility for any damages, losses, costs or expenses incurred by any party from the direct or indirect use of the information contained in this newsletter. You should contact xLM directly to discuss materials covered in this newsletter before implementation.

Revision  2

Creation Date  6

User Object Id  3

File Type  4

Application Reference File Name  1

ID  0

Description  5

Figure 2 Flexibility to specify query results table column ordering and attributes to display

**SmarTeam Web Part**

ID	Application Reference File Name	Revision	User Object Id	File Type	Description	Creation Date
CATPRT-0297	<a href="#">jetski_body_wings.CATPart</a>	a	Joe Davis	CATIA Part	Mechanical extension of steering system (body wings)	5/31/2006 12:28:18 PM
CATPRT-0298	<a href="#">jetski_engine1_v2.CATPart</a>	a	Joe Davis	CATIA Part	Engine En99	5/31/2006 12:28:19 PM
CATPRT-0299	<a href="#">jetski_engine2.CATPart</a>	a	Joe Davis	CATIA Part	Oil Tank	5/31/2006 12:28:19 PM
CATPRT-0300	<a href="#">jetski_engine3.CATPart</a>	a	Joe Davis	CATIA Part	Engine Exhaust	5/31/2006 12:28:19 PM
CATPRT-0301	<a href="#">jetski_engine4.CATPart</a>	a	Joe Davis	CATIA Part	Engine Pipe 120	5/31/2006 12:28:20 PM
CATPRT-0302	<a href="#">jetski_engine5.CATPart</a>	a	Joe Davis	CATIA Part	Engine Cover 109A	5/31/2006 12:28:20 PM
CATPRT-0303	<a href="#">jetski_engine4.CATPart</a>	a	Joe Davis	CATIA Part	Engine Pip 108T	5/31/2006 12:28:20 PM
CATPRT-0304	<a href="#">seat208.CATPart</a>	a	Joe Davis	CATIA Part	Seat 407	5/31/2006 12:28:20 PM
CATPRT-0305	<a href="#">bl208-99-08.CATPart</a>	a	Joe Davis	CATIA Part	Extensible Climbing device (back ladder)	5/31/2006 12:28:21 PM
CATPRT-0306	<a href="#">rb-908-90-89.CATPart</a>	a	Joe Davis	CATIA Part	Reinforcement to stabilize throttle mechanism (Rudder Base)	5/31/2006 12:28:21 PM

1 2 3 4

Figure 3 XML-based configurable menu templates for customizable file operations

This newsletter is provided as an information service to xLM clients and other interested individuals. xLM disclaims all responsibility for any damages, losses, costs or expenses incurred by any party from the direct or indirect use of the information contained in this newsletter. You should contact xLM directly to discuss materials covered in this newsletter before implementation.

## **SmarTeam–Outlook Integration: Workflow Solution**

The xLM Microsoft Outlook integration team has been developing custom Outlook add-ins to provide SmarTeam-Outlook integrations based on requests, feedbacks, and suggestions from you, our clients. An example of such a solution is an add-in to allow easy saving of email messages and attachments from Outlook into SmarTeam. Development is underway for a solution to easily approve or reject SmarTeam workflows from within Outlook. Watch this space for more details in upcoming issues.

If you are interested in extending custom PLM functionalities into either Outlook or other Microsoft Office products, please give us a call. We will be glad to discuss your needs and solution options.

## ***SmarTeam News***

---

### **SmarTeam Releases V5R19 – Vault Setup**

SmarTeam has released SmarTeam V5R19. One of the key changes in V5R19 is a new vault infrastructure. The new vault infrastructure enhances working with local vaults and adds vault support over HTTPS. SmarTeam has delivered a new *Vault Server Setup Utility* (for Windows environment) for defining vaults, implementing the Vault Server process, and help configuring vault security modes.

In addition, the new vault infrastructure allows a Web server residing at a remote Site A to access a Vault Server at Site B that maybe local to the user. This way, data is saved in the local vault. Finally, there is an improved logging mechanism that displays all vault and SmarTeam activities.

### **Feature highlights of V5R19:**

- CWI enhancements with new vault Infrastructure
- New Web form designer
- 3DLive connector
- Silent installation
- Role based installation
- Unix withdrawal
- MUS support for SNE

This newsletter is provided as an information service to xLM clients and other interested individuals. xLM disclaims all responsibility for any damages, losses, costs or expenses incurred by any party from the direct or indirect use of the information contained in this newsletter. You should contact xLM directly to discuss materials covered in this newsletter before implementation.

- ENOVIA SmarTeam and SW2009 certification
- ENOVIA SmarTeam and Inventor 2009 certification
- Major performance improvements
- Express methodology

### **3DLive for ENOVIA SmarTeam**

3DLive is a tool that can help you manage, monitor, and control a large volume of isolated data. It provides a 3-D representation and establishes a central access point for multiple data sources. Managers use 3DLive to:

- Create a high-level management view
- Establish a central data access point
- Perform quick searches
- Retrieve data
- Sort and filter information

3DLive’s intuitive user interface provides both textual and graphical BOM information as shown in Figure 4 (on page 9). Connecting a PLM solution such as SmarTeam to 3DLive allows a user to visualize the relationship among the data sources, thus facilitating enterprise management decisions.

## ***SmarTeam Release Info***

---

### **End-of-Service Dates \***

Please note the following end-of-service dates for the respective SmarTeam version:

<b>SmarTeam Version</b>	<b>End-of-Service Date</b>
V5R14	January 8, 2007
V5R16	June 3, 2007

---

\* Information provided by Dassault as of November 10, 2008 and is subject to change.

This newsletter is provided as an information service to xLM clients and other interested individuals. xLM disclaims all responsibility for any damages, losses, costs or expenses incurred by any party from the direct or indirect use of the information contained in this newsletter. You should contact xLM directly to discuss materials covered in this newsletter before implementation.

V5R17	October1, 2008
V5R18	March 29, 2009
V5R19	(Tentative) Jun 03, 2011

After the end-of-service date, no more service packs, hot fixes or Dassault/SmarTeam support will be provided for the specific version. If your version of SmarTeam is reaching its end-of-service date, we strongly encourage you to begin developing an upgrade plan now to avoid disruptions later. If you have any questions, please contact us. We will be glad to provide further information and assist you in planning and deploying your SmarTeam upgrade.

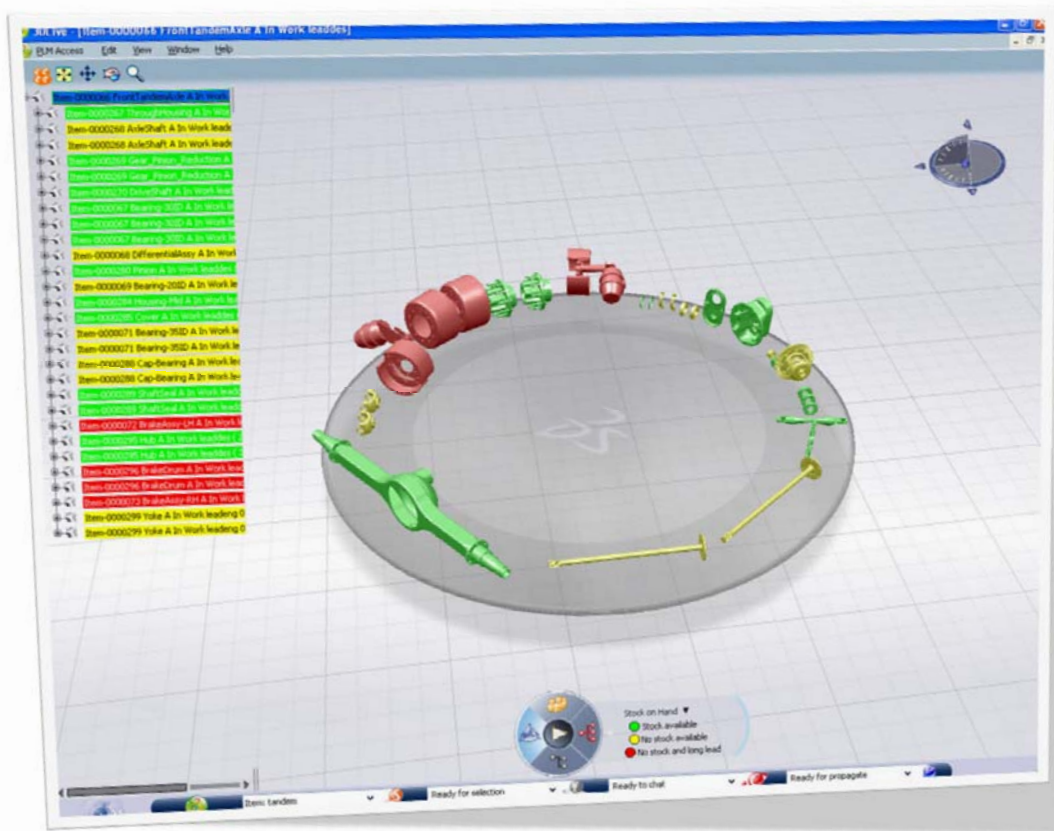


Figure 4 3DLive provides a visual representation of data from different sources

This newsletter is provided as an information service to xLM clients and other interested individuals. xLM disclaims all responsibility for any damages, losses, costs or expenses incurred by any party from the direct or indirect use of the information contained in this newsletter. You should contact xLM directly to discuss materials covered in this newsletter before implementation.

## Upcoming Releases

1. The expected release date for SmarTeam V5R19 Service Pack 3 is January 12, 2009.
2. Service Pack 8 is expected to be the last service pack release for SmarTeam V5R18.

## *Feedback & Contact Us*

---

We'd love to hear from you! Please send us your thoughts on this newsletter and future topic ideas that you would like us to cover. Also, send us your interesting SmarTeam experiences and we will share your story with other readers!

xLM is a consulting company with extensive experiences in delivering innovative solutions and customizations to solve difficult PLM and IT challenges. It is our goal to assist you with your SMARTTEAM implementation and to partner with you in developing and deploying the best solutions for your environment. Contact us and let us show you how we can meet ***your challenges*** with ***our solutions***, and make things simpler and better for you.

To contact us, please call us at **248.926.5932** or send email to [info@xlmsolutions.com](mailto:info@xlmsolutions.com).

To reach an xLM associate directly, please send email to:  
<first letter of the first name><last name>@xlmsolutions.com

xLM Solutions, LLC.  
39500 Fourteen Mile Road  
Suite 175  
Walled Lake, MI 48390-3908

© Copyright 2008, xLM Solutions, LLC. All rights reserved.

This newsletter is provided as an information service to xLM clients and other interested individuals. xLM disclaims all responsibility for any damages, losses, costs or expenses incurred by any party from the direct or indirect use of the information contained in this newsletter. You should contact xLM directly to discuss materials covered in this newsletter before implementation.