

# *xLM ENOVIA SmarTeam Newsletter*



## *Inside this Issue:*

About Us .....	2
What's New at xLM .....	2
SmarTeam Tools .....	3
SmarTeam News .....	5
SmarTeam Release Info .....	7
Feedback & Contact Us .....	8

## *About Us*

---

Welcome to another issue of the *xLM ENVOIA SmarTeam Newsletter*! If you are unfamiliar with us, here is what **xLM Solutions** is, and what we can do for you.

The xLM team consists of experienced and exceptional software consulting and system integration professionals. We have extensive knowledge in Product Lifecycle Management (PLM); information, Internet and Microsoft technologies; and other enterprise software solutions. Our clients include organizations from a wide variety of industries, all seeking solutions to a common challenge: to effectively and efficiently manage proprietary, classified or otherwise sensitive data. To address this challenge, we provide our clients with end-to-end PLM services including requirements analysis, solutions installation, configuration, customization, support, and maintenance.

We take pride in listening and ensuring that our clients' PLM and IT needs are properly met in a timely manner. It is our goal to provide you, our valuable customer, with quality tools, resources, and innovative solutions for successful information systems management. Call us with your needs!

## *What's New at xLM*

---

In late April and early May, xLM attended the 2008 COE and EACC (ENOVIA Americas Customer) conferences. It was our pleasure to meet some of our readers for the first time, as well as to catch up with old acquaintances. At the conferences, we presented sessions on:

- SmarTeam and Microsoft SharePoint interoperability
- Advanced SmarTeam Programming
- SmarTeam Data Migration Strategies
- Adopting PLM in the Mid Market—Going Forward with ENOVIA SmarTeam Express Solutions

The topics were timely and the presentations were well received. There were many interesting and thought-provoking discussions and suggestions at each session. If you were unable to attend the conferences but are interested in any of these topics, please contact us. We will be glad to provide you with the slides, discuss the materials, and even give you a personal presentation!

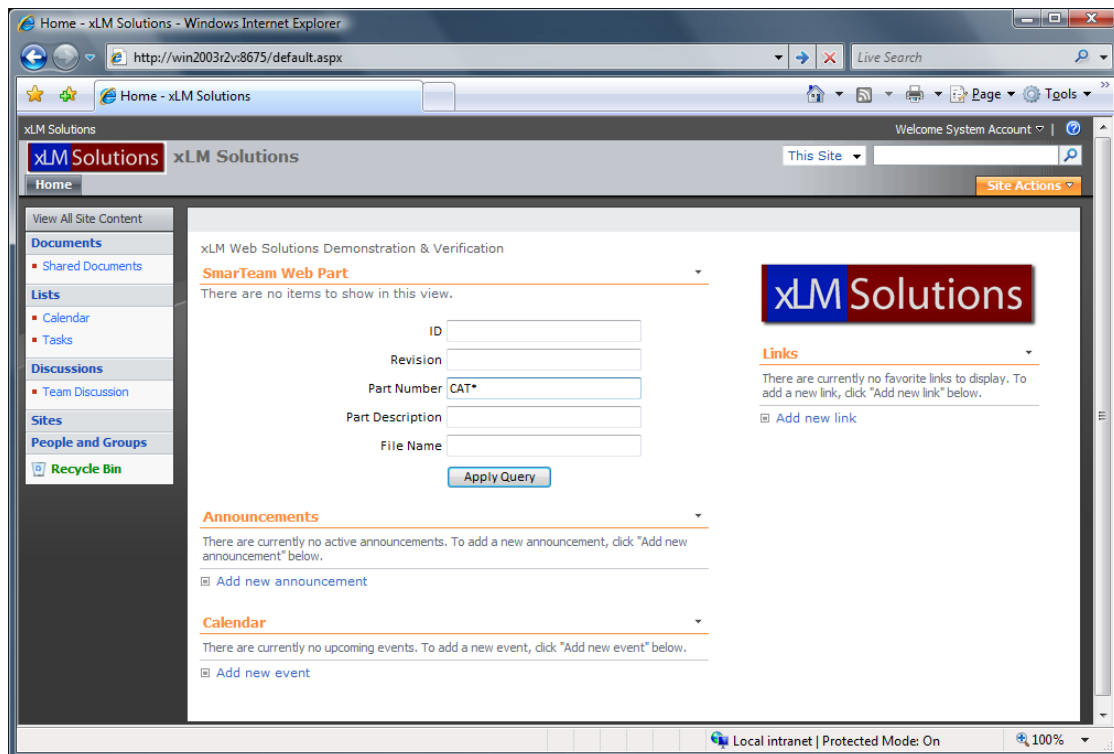
This newsletter is provided as an information service to xLM clients and other interested individuals. xLM disclaims all responsibility for any losses, costs or expenses incurred by any party from using the information in this newsletter. You should contact xLM directly to discuss materials covered in this newsletter before implementation.

# SmarTeam Tools

## SmarTeam-SharePoint Integration

Microsoft SharePoint is a suite of technologies that allows you to easily set up and maintain general and purpose-specific web sites and web-based applications. The underlying technology—Microsoft SharePoint Services—is a royalty-free product that is already bundled with your Windows 2003 or later server.

xLM has been developing integration solutions to harness the features of both SmarTeam and SharePoint, and to increase the value of your investment in these products. One of our solutions is a SmarTeam-SharePoint integration (Figure 1) that allows you to access data through a SmarTeam query performed from within SharePoint. The returned SmarTeam data is tabulated in a SharePoint web part (Figure 2). If the query results reference files managed in SmarTeam, links to the original documents are also provided in the data table. You can then retrieve a document directly from the SmarTeam vault by clicking on the respective hyperlink in SharePoint.



**Figure 1 The xLM SmarTeam-SharePoint integration solution allows a SmarTeam query to be performed from within SharePoint**

This newsletter is provided as an information service to xLM clients and other interested individuals. xLM disclaims all responsibility for any losses, costs or expenses incurred by any party from using the information in this newsletter. You should contact xLM directly to discuss materials covered in this newsletter before implementation.

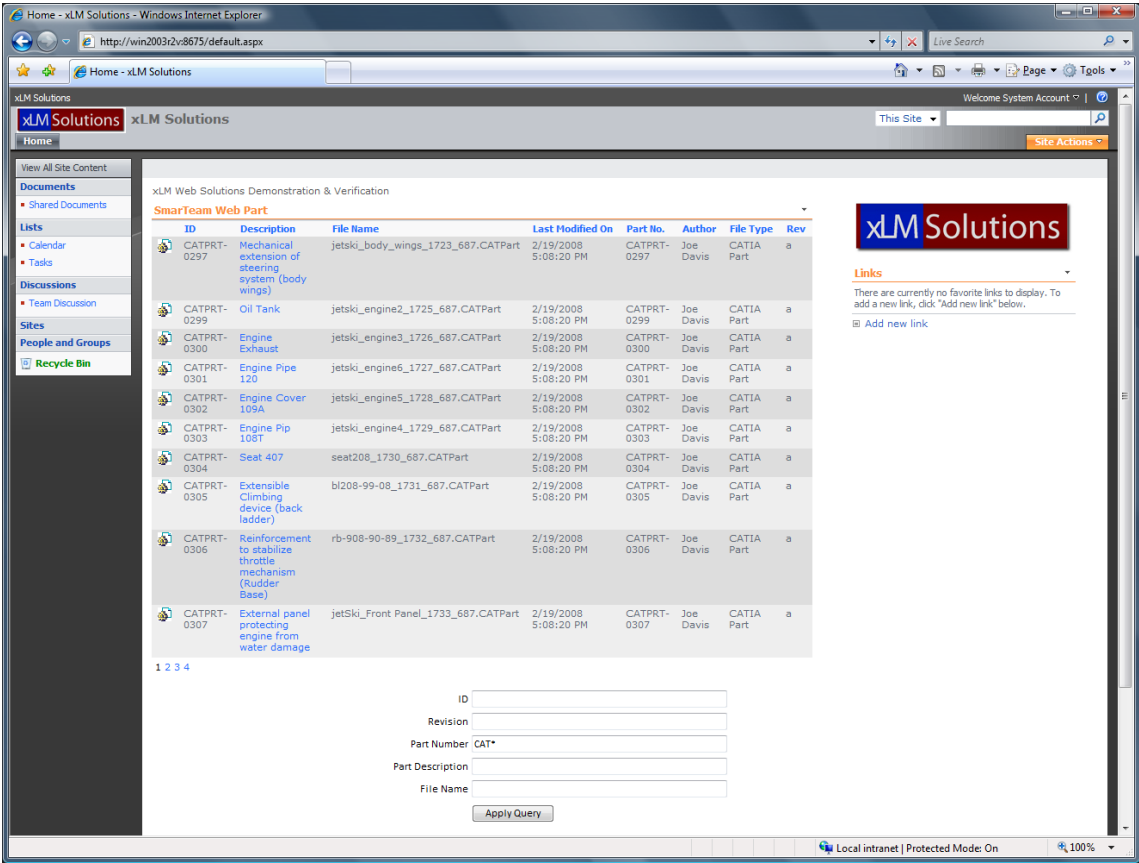


Figure 2 SmarTeam query results tabulated in a SharePoint web part

Besides providing easy SmarTeam data access from SharePoint, the integration solution also allows users with limited or no SmarTeam familiarity to access its data and documents. This is particularly useful in supporting collaborations among engineering and other non-SmarTeam-based business units.

Whether you are interested in integrating SmarTeam into your SharePoint environment, or just curious about SharePoint, contact us to find out more! We will be glad to provide additional information, discuss your needs, and recommend tailored solutions for you. We can also assist you in conducting analyses and feasibility studies. Let us show you how xLM's customized SmarTeam and SharePoint solutions may benefit you!

This newsletter is provided as an information service to xLM clients and other interested individuals. xLM disclaims all responsibility for any losses, costs or expenses incurred by any party from using the information in this newsletter. You should contact xLM directly to discuss materials covered in this newsletter before implementation.

## *SmarTeam News*

---

### **ENOVIA V6**

With the announcement of V6, there has been much confusion in the market regarding what V6 is, the future of V5, and if any special arrangements are required of current V5 customers to prepare for V6. We hope to answer some of these questions here and clarify any confusion for you.

ENOVIA V6 will have two offerings: one for large enterprises, and the other for small and medium businesses (SMB). ENOVIA V6 for large enterprises will be announced during Q2 of 2008, and ENOVIA V6 for SMB will be released gradually starting Q4 of 2008. In V6, all ENOVIA solutions are built on a common, unified technology platform that is based on a combination of the MatrixOne, VPLM, and SmarTeam technologies to accommodate the respective audience (i.e., .NET). Both ENOVIA and ENOVIA SmarTeam products offer FULL PLM solutions, with distinct features and offerings to best fit the respective customers.

V5 will be around for many years to come. ENOVIA SmarTeam is working on V5R19 and V5R20, and there is currently no end-of-life date set for V5.

Current V5 customers will not be forced to upgrade to V6 in the near future. V6 supports the co-existence of V5 and V6 data, and ENOVIA SmarTeam is also providing a tool for V5 customers who wish to migrate to V6. It is estimated that no major migrations from V5 to V6 will occur for another 2-3 years.

If you have any questions regarding the V6 announcement or how your specific implementation may be affected, please contact us and we will be happy to answer any questions you may have.

### **Supply Chain Solution**

SmarTeam is releasing a Supply Chain Solution that will allow a 'Tier X' company the ability to import OEM data and export their project specific data back to the OEM. This solution will optimize:

This newsletter is provided as an information service to xLM clients and other interested individuals. xLM disclaims all responsibility for any losses, costs or expenses incurred by any party from using the information in this newsletter. You should contact xLM directly to discuss materials covered in this newsletter before implementation.

## 1. Support OEM & above tiers methodology

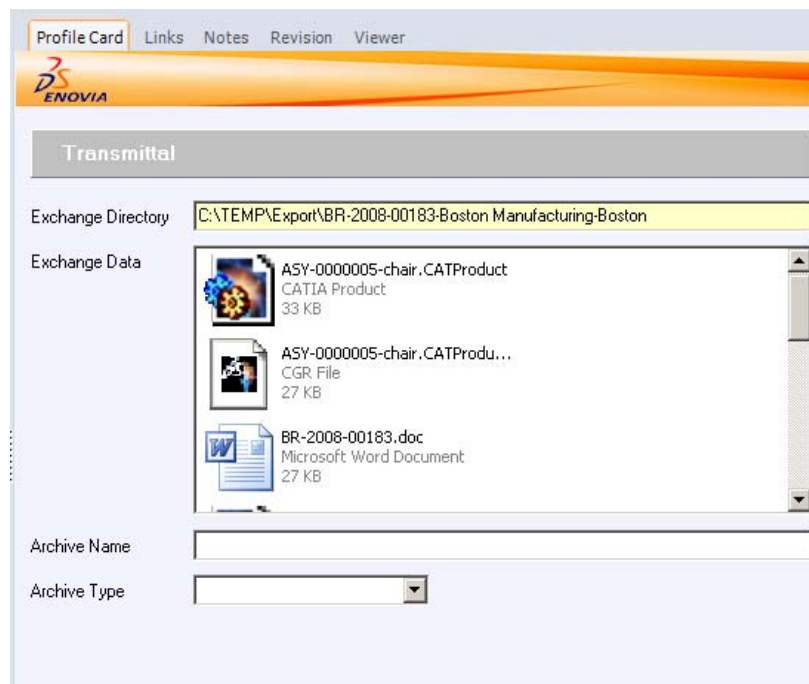
- OEM specific environment support:
  - Multiple CAD versions within the SmarTeam environment
  - Project based numbering rules, sequences, authorizations, and environments

## 2. Import and export design data

- Create base lines for traceability and compare
- Conversions from supplier specific to OEM specific
- Save and manage files in neutral formats
- Manage reference data — 3DXML/CGR
- Optional CAD properties filled with predefined but changing values
- The outgoing data follows a predefined folder structure (operating resource construction)
- Data are verified by validation applications (Q-Checker, VALIDAT, etc.)
- Neutral conversion
- Data logging: Who sent what to whom at which time?

## 3. Transmittal handling for data exchange

- Trace/audit data sent (Figure 3)



**Figure 3 Transmittal handling for data exchange**

This newsletter is provided as an information service to xLM clients and other interested individuals. xLM disclaims all responsibility for any losses, costs or expenses incurred by any party from using the information in this newsletter. You should contact xLM directly to discuss materials covered in this newsletter before implementation.

## *SmarTeam Release Info*

---

### **End-of-Service Releases\***

Please note the following end-of-service dates for the respective SMARTEAM version:

<b>SMARTEAM Version</b>	<b>End-of-Service Date</b>
V5R14	January 8, 2007
V5R16	June 2, 2007
V5R17	September 29, 2008
V5R18	(Tentative) End of September, 2009

After the end-of-service date, no more service packs, hot fixes or Dassault/SmarTeam support will be provided for the specific version. If your version of SmarTeam is reaching its end-of-service date, we strongly encourage you to begin developing an upgrade plan now to avoid disruptions later. If you have any questions, please contact us. We will be glad to provide further information and assist you in planning and deploying your SmarTeam upgrade.

### **New Release**

Service Pack 5 for V5R18 (V5R18 SP5) has been released on May 26, 2008.

### **Upcoming Releases**

The following are tentative dates for the upcoming SmarTeam and service packs releases:

---

\* Information provided by Dassault as of June 1, 2008 and is subject to change.

This newsletter is provided as an information service to xLM clients and other interested individuals. xLM disclaims all responsibility for any losses, costs or expenses incurred by any party from using the information in this newsletter. You should contact xLM directly to discuss materials covered in this newsletter before implementation.

<b>SMARTEAM Version / Service Pack</b>	<b>Tentative Release Date</b>
V5R18 SP6	Week 31 (End of July, 2008)
V5R19 SP7	Week 43 (End of October, 2008)
V5R19 SP1	Week 36 (End of August, 2008)

Feature highlights of **V5R18 SP6**:

- Certifications for Windows Server 2003 SP2 (x64) & R2 SP2 (x64)
- Support for SolidWorks 2008 (x64)
- Menu Improvements such as performance
- Updated Admin Tools look & feel

## ***Feedback & Contact Us***

---

We'd love to hear from you! Please send us your thoughts on this newsletter and future topic ideas that you would like us to cover. Also, send us your SmarTeam experience and we will share your story with our readers!

xLM is a consulting company with extensive experiences in delivering innovative solutions and customizations to solve difficult PLM and IT challenges. It is our goal to assist you with your SMARTEAM implementation, and to partner with you on developing and deploying the best solutions for your environment. Contact us and let us show you how we can meet ***your challenges*** with ***our solutions***, and make things simpler and better for you.

To contact us, please send email to [info@xlmsolutions.com](mailto:info@xlmsolutions.com). You may also reach us at **248.926.5932**.

To reach an xLM associate directly, please send email to:  
<first letter of the first name><last name>@xlmsolutions.com

xLM Solutions, LLC., 39500 Fourteen Mile Road, Suite 175, Walled Lake, MI 48390-3908

This newsletter is provided as an information service to xLM clients and other interested individuals. xLM disclaims all responsibility for any losses, costs or expenses incurred by any party from using the information in this newsletter. You should contact xLM directly to discuss materials covered in this newsletter before implementation.