

## EPDM URL Tool

### Challenges:

- Access to EPDM documents require either an EPDM client or the EPDM Web Server
- Impossible to link to EPDM from external sources
- Impossible to specify version or revision for extraction

### Solution:

- The *EPDM URL Tool* is a convenient tool for accessing EPDM data outside of EPDM through a simple URL link.

### Benefits:

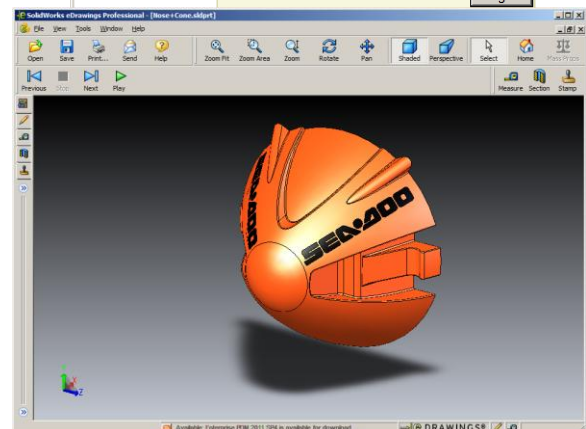
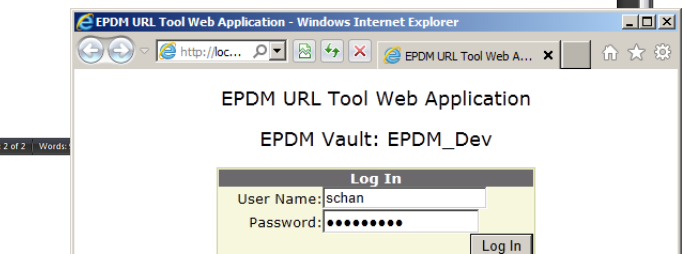
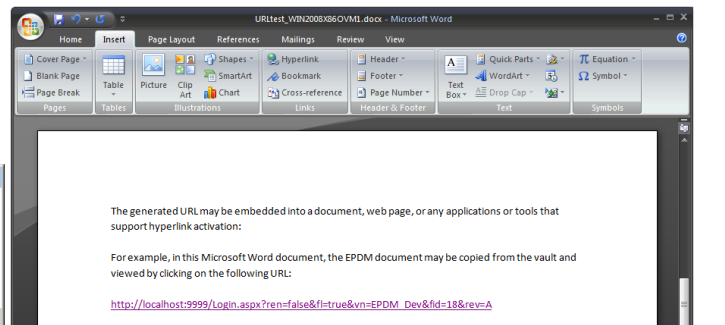
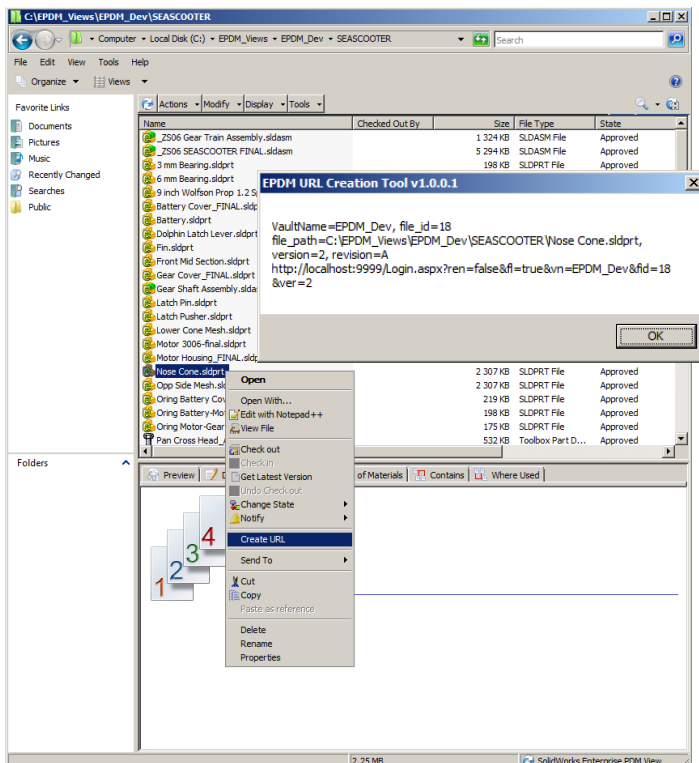
- Provides easy access to EPDM files from outside of the EPDM environment
- Links may be embedded into documents, ERP systems, or web pages to provide near real-time access to EPDM documents
- Ensuring access to the latest document
- Administrator Validation Tool to ensure URL links are valid against file data in EPDM

### Features:

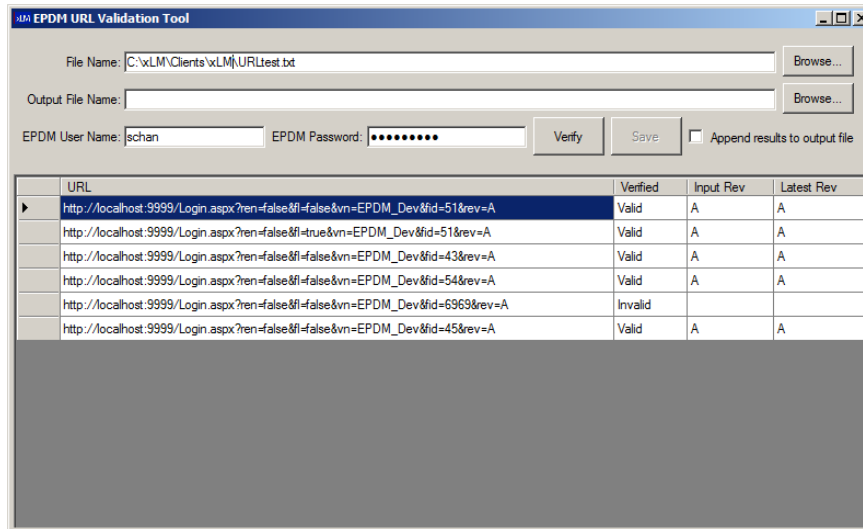
- Provides a URL for each selected EPDM file with the specific version and/or revision
- Users may utilize the generated URLs to extract (copy out) EPDM files
- User access rights are verified against EPDM policies to enforce security
- URL may be edited to access alternate versions or revisions of the EPDM file
- The URL Validation Tool may be used to validate the generated URL as well as provide warning if the requested file has a later revision
- The command-line URL Validation Tool may be used in scripts to automate URL validation

### System Requirements:

- Microsoft Windows Server 2003 R2 / 2008 R2 with IIS
- EPDM 2008 or higher
- Client Browsers: IE 9 or above, Firefox 4 or above, Chrome 12 or above, Safari 5 or above



*EPDM URL Tool provides the ability to generate a URL. Upon clicking the URL the user is authenticated to EPDM and the file is displayed*



*URL Validation Tool, validating a list of URLs to determine if the URLs are pointing to valid EPDM Files*